

# 33-4843 FiberPlex SFP-HHDVR-0000-L

SFP HDMI/DVI TO 3GBPS SDI CONVERTER SINGLE RECEIVER, HDCP, MSA, TYPE D CONNECTOR



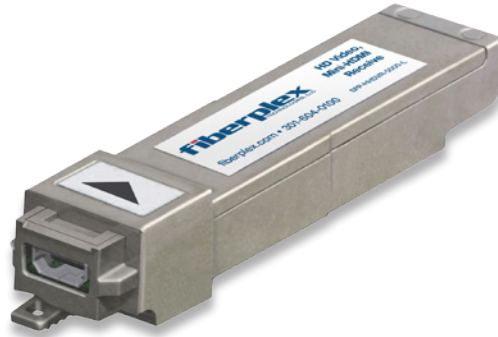
## Description

The SFP-HHDVR-0000-L is an electrical SFP receiver module designed to convert HDMI/DVI (High definition multimedia interface®) to an SDI signal output without scaling artifacts. The SFP-HHDVR-0000-L enforces HDCP, therefore no protected content will pass. Up to 8 channel of audio is supported and de-embedded from the HDMI signal.

The SFP-HHDVR-0000-L provides module identification information, configuration and diagnostic monitoring through a 2 wire serial interface. It is also a hot-pluggable solution for field system upgrade and maintenance.

The SFP-HHDVR-0000-L is interchangeable with other MSA optical video SFP, coaxial SFP and SFP converter improving product flexibility. Ganged cages, belly-to-belly and superposed cages mounting are supported. The module provides reduced development risk and cost.

The SFP-HHDVR-0000-L is Pb-free and ROHS compliant.



## Summary of Benefits

**Flexibility:** Build a totally optimized system by mixing electrical SDI, NTSC/PAL converter, HDMI/DVI and optical video SFP

**Cost:** Design cost effective system

**Modularity:** Allow hot scalability and replacement of critical components wherever possible

**Density:** Highest density ever achieved for SDI to HDMI/DVI and HDMI/DVI to SDI converters

**Interchangeable:** Fully compatible with existing MSA video optical SFP, SDI SFP and SFP converters

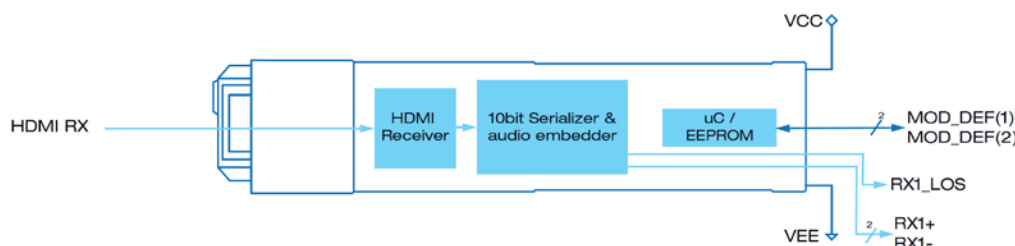
**Hot-Pluggable:** Swap without affecting system behavior

**Advanced Packaging:** Support ganged cages, belly-to-belly and superposed cages mounting

**Green:** The SFP-HHDVR-0000-L is Pb-free and ROHS compliant

## Typical Applications

- Multi-channel/multi-media transport with WDM-16
- Cost effective SDI monitoring solution
- Processing cards
- SDI switchers
- Video routers
- Broadcast cameras



## Video

### Features:

- SMPTE 424M, 292M and 259M compliant
- Supported format: 525/625,
  - 720p/1080i (50/59.94/60Hz),
  - 1080p (23.98/24/15/29.97/30/50/59.94/60Hz)
- HDMI/DVI Input:
  - 24 bit (3x8 bits)
  - RGB 4:4:4, YCbCr 4:2:2, YCbCr 4:4:4
  - BW = 150Mhz
  - RGB Range (Full/SMPTE)
  - Up to 8 channel audio de-embedding (PCM)
  - HDMI 1.4 Type D connector
  - HDMI Type D plug with retention
  - HDCP supported
- Control via serial interface including:
  - Voltage & Temperature Monitoring
  - HDMI/DVI interface configuration
  - EDID reading, Audio mapping
  - Module Information
- Low Power Consumption
- Single Supply +3.3V
- 58.5mm x 13.4mm x 8.6mm SFP Package
- Operating temperature: 0°C to 70°C

## Used With

Model	Description
33-8001 WDM-16 33-8018 WDM-8	Wave Division Multiplexer
33-4712 TD-6010 33-4713 FOI-6010	#\$ 9Tbe8WY[TW ; fV0SUE8B! E8BŁ Fc5 eU/hVdI ad Taj